

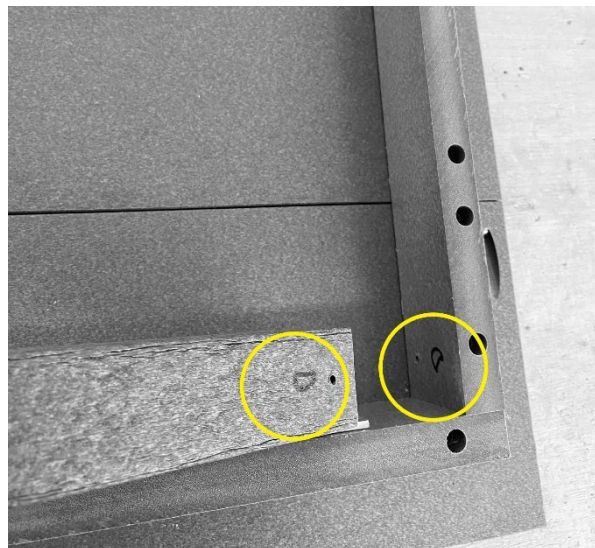
BUILT TO LAST
COMFORT THAT LASTS A LIFETIME

Bistro Table Assembly Instructions

- 1) Unbox all contents and lay out on flat surface.
- 2) Separate the two leg "H" frames and horizontal brace, locate the letters on each leg and under the table top itself. These will be used to match the predrilled leg holes to those in the tabletop.
- 3) Unwrap hardware bag containing (12) 2" screws, (4) 1 5/8" screws & a #2 square drive bit.



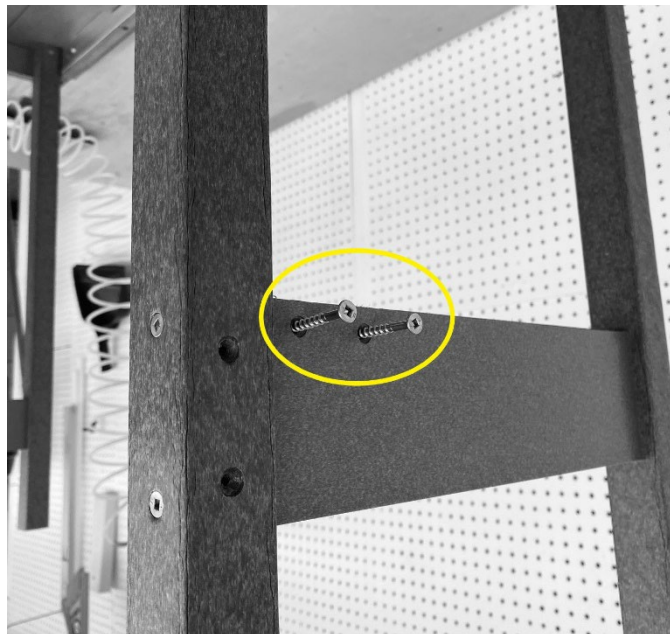
- 4) Separate the two leg "H" frames and horizontal brace, locate the letters on each leg and under the table top itself. These will be used to match the predrilled leg holes to those in the tabletop.



- 5) Once you have matched the corresponding leg letters to those on the tabletop, grab (2) 2" screws and install them into the predrilled leg hole so that 1/8" of the screw comes out the other side. (This helps with lining up the predrilled holes in the legs & table)



- 6) Tighten the (2) screws until the screw head is flush with the leg and repeat step #5 on the other half of the leg assembly.
- 7) Repeat Steps 5 & 6 for the other leg assembly.
- 8) Flip the table upright so that it is standing on its newly installed legs.
- 9) Using (2) 1 5/8" screws, install them into the two predrilled holes on the crossmember section of the legs so that 1/8" protrudes for alignment.



- 10) Grab the horizontal brace (piece with two triangles) and align the screw holes. Begin to tighten until the screw head is flush.
- 11) Once all (4) 1 5/8" have been installed, use the remaining (4) 2" screws to finish connecting the legs to the horizontal brace.



Your table is now complete! Proceed to the next page for Bistro Stool assembly instructions.

- 1) Unbox the following components and lay the out on a flat working surface:
 - (40) 2.5" screws
 - (8) Bistro Stool Legs
 - (2) Bistro Stool seat sections
 - (2) lower leg braces
- 2) Once both stool parts are laid out, sort the legs that have letters and match them with the corresponding stool lettered stool top. Do the same for the numbered legs and stool top.
- 3)