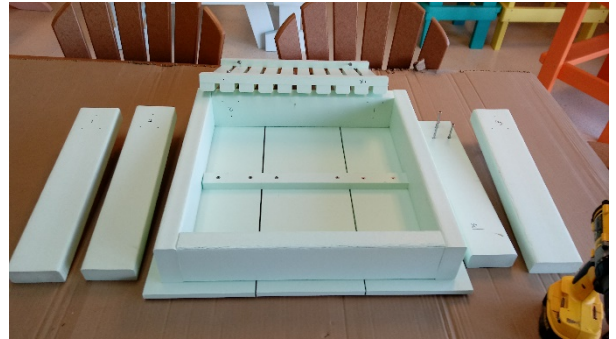
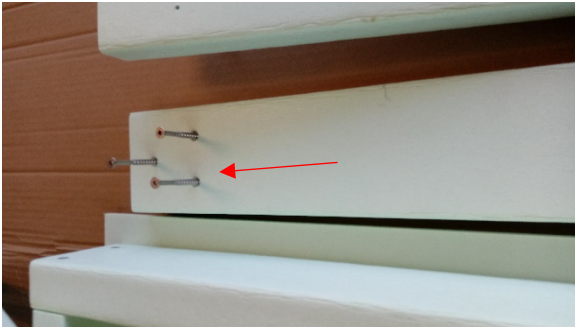


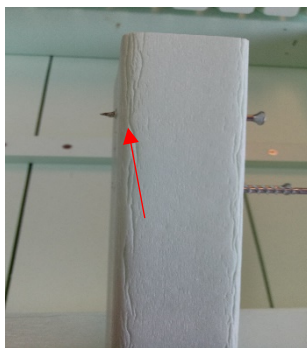
## Side Table Assembly Instructions

Also applicable to: Chaise Side Table Side Table Counter, Side Table Dolphin Watch, and Garden Side Table

1. Make sure you have all the necessary parts: 1 bag of screws, 4 legs, 1 tray, and 1 table top. Lay out everything as shown at right.



2. Remove screws from the bag and partially insert them so that each leg has 3 screws as seen in picture at left.
3. Each leg is numbered and has a matching number on the table top itself. To begin leg attachment, run one screw through the leg till it partially protrudes as seen at left. This will help guide your leg perfectly into place. Place the screw you ran through into the matching hole on table top as seen at right and tighten. **DO NOT OVERTIGHTEN.** Repeat for all four legs until they are securely fastened to the table top.



4. Locate the leg with an "x" and find the "x" marked on the tray. These match to make assembly of tray and tray alignment easy. Note that there is also a strike line to help aid you in proper placement as seen at left. Run the screw by the "x" on the tray through till it protrudes, just like you did on the legs. Next, put the point of the screw into the hole by the "x" on the leg and tighten as seen at right. Using the strike lines on each leg, hold the tray even with the line and run the remaining 3 screws in till tight.

